

## Registration

	Early	Late	On-site
	2010 Aug 1 -	2011 Feb 1 -	2011 Aug 5 -
<b>Standard</b>	¥30,000	¥40,000	¥50,000
<b>Student</b>	¥10,000	¥15,000	¥20,000
<b>Acc/Person</b>	¥10,000	¥15,000	¥20,000
<b>Corporation</b>	¥100,000	¥150,000	¥200,000

## Venue

<http://kobe-cc.jp/english/kaigi/index.html>

All the programmed sessions will be held in the Kobe Int'l Conference Center (Convention Center) on Port Island, a man-made island off the coast of Kobe.



Conference Center



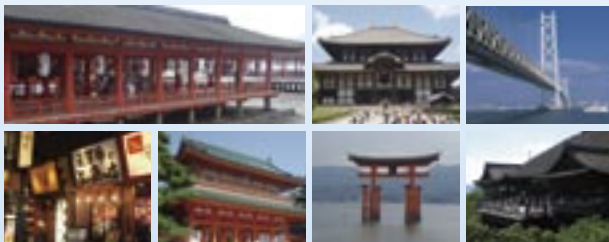
Main Hall



Int'l Conference Room

## Hotels

We have a variety of hotels on Port Island and Kobe Sannomiya area with special congress rates for the participants. You may expect ¥6,000-¥20,000 for a single room; ¥6,000-¥25,000 for a twin room for 2, both inclusive of all charges with breakfast. There are also cheaper accommodations for use by students.



Photos (from top left, clockwise):  
Itsukushima Shrine(Hiroshima), Todaiji Temple(Nara), Akashi Kaikyo Bridge(Kobe), Kiyomizu Temple(Kyoto), Miyajima(Hiroshima), Heian Shrine(Kyoto), Nightlife(Osaka)

## About Kobe

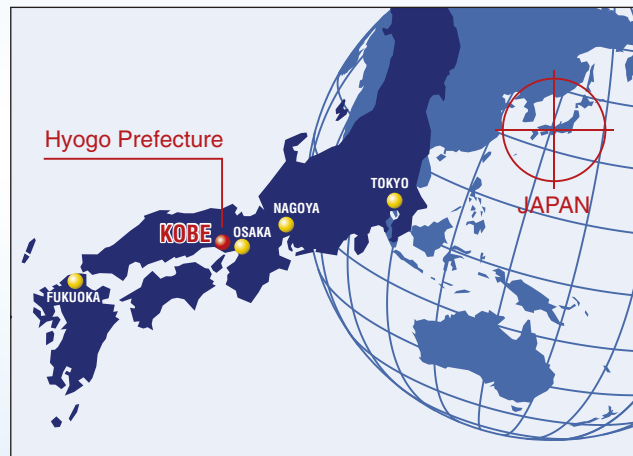
<http://www.feel-kobe.jp/english/index.html>

Kobe is served by two international airports, Kansai and Osaka as well as by a municipal Kobe airport. Tokyo can be reached by Bullet train or by air.

Kobe is conveniently located in close proximity to many tourists' attractions: we offer day tours to Kyoto, Nara, Himeji Castle, Osaka as well as overnight trips to Hiroshima. We also plan to organize scientific tours to local prisons, courts and so on.

Kobe is a port city with 1.5 million inhabitants located near Osaka in western Japan. As a port town, Kobe has a distinctive international atmosphere which attracts tourists both from abroad and from Japan.

## Access to Kobe



*We look forward to seeing you in Kobe!*

## Secretariat

16th World Congress of the ISC  
3F TTS Center, 1-4-4 Mikuriya-sakaemachi  
Higashi-osaka, OSAKA 577-0036 JAPAN  
Tel: 06-6618-4323 Fax: 06-6781-8883  
E-Mail: [wcon2011@oucwo.daishodai.ac.jp](mailto:wcon2011@oucwo.daishodai.ac.jp)  
<http://wcon2011.com>



First Circular

Call for Papers



# 16th WORLD CONGRESS

## International Society for Criminology

### Global Socio-Economic Crisis and Crime Control Policies: Regional and National Comparison

**Aug 5-9 2011**  
**Kobe Int'l Conference Center**  
<http://wcon2011.com>



Japan Federation of  
Criminological Associations  
日本犯罪関連学会連合会

Supported by:

Ministry of Justice; Ministry of Education, Culture, Sports,  
Science and Technology; National Police Agency;  
Supreme Court of Japan; Science Council of Japan;  
Japan Foundation; Kinki Federation of Bar Association;  
Osaka Bar Association; Hyogo-ken Bar Association;  
Hyogo Prefecture; Kobe City



## Welcome

The Japan Federation of Criminological Associations (JFCA) cordially welcomes you to participate in the forthcoming 16th World Congress of the International Society for Criminology, Aug 5-9 2011 in Kobe, Japan.

## General Theme

### Global Socio-Economic Crisis and Crime Control Policies: Regional and National Comparison

Global economic crisis has caused significant structural changes in state and society in many countries. Those changes must have also affected crime situation. What crime prevention strategies have been adopted by different countries to cope with such changes? This Congress examines the current situation of crime and crime prevention strategies mainly through comparative analysis of regions and nations.

## Plenary Sub-Themes

- 1 Global Economic Crisis and Criminology
- 2 Models of State and Crime Prevention Strategies
- 3 Corporate and Business Crime
- 4 Frontiers of Clinical Criminology



## Program

Dates	A M	P M		All Day
8/5 Fri	—	Registration	Welcome Reception	—
8/6 Sat	Opening Ceremony Plenary Session 1	Paper Sessions Roundtable Sessions		Poster Sessions Exhibition
8/7 Sun	Plenary Session 2			
8/8 Mon	Plenary Session 3			
8/9 Tue	Plenary Session 4	Sessions (Paper/Roundtable) ISC Board Meeting General Assembly, Closing Ceremony	Farewell Reception	

## Sessions

### 1 Plenary Sessions

Internationally recognized experts are invited to make presentations on each sub-theme.

### 2 Paper Sessions

Submissions Called

#### ① Complete Sessions

Anyone may submit a “complete session.”

Session organizer needs to submit an abstract of the session, presenters’ names and abstracts of all papers.

#### ② Individual Papers

Anyone may submit a paper.

Presenter needs to submit an abstract of the paper.

### 3 Roundtable Sessions

Submissions Called

Session organizer needs to submit an abstract of the session and names of the discussants.

### 4 Poster Sessions

Submissions Called

Anyone may submit an abstract for a poster session.

## Languages

English, French, Spanish, and Japanese

- ☞ For all Plenary Sessions, simultaneous interpreters are provided.
- ☞ For paper/roundtable sessions, single-language sessions may be proposed.

## Fellowship

We offer a limited number of fellowships for participants from the UN’s LDC (Least Developed Countries) list, who wish to make individual paper presentations. Applicant must submit a full-paper by Jan31, 2011 for screening.

## International Society for Criminology



The International Society for Criminology (ISC) is an NGO established in 1938 with nearly 1,000 members from almost fifty countries.

President: Tony Peters

Secretary-General: George Picca

President, Scientific Commission: Serge Brochu

<http://pagesperso-orange.fr/societe.internationale.de.criminologie/>

## Local Host



The Japan Federation of Criminological Associations (JFCA) was formed in 2008 to host the ISC’ World Congress in 2011. It consists of:

Association for the Study of Security Science  
 Japanese Association of Correctional Medicine  
 Japanese Association of Criminal Psychology  
 Japanese Association of Criminology  
 Japanese Association of Social Problems  
 Japanese Association of Sociological Criminology  
 Japanese Association of Victimology  
 Japanese Society of Law and Forensic Social Services

### ☞ JFCA Organizing Committee

Chair: Toyo ATSUMI  
 Vice-Chair: Yohji MORITA  
 Secretary-General: Ichiro TANIOKA

### ☞ JFCA Local Arrangement Committee

Chair: Setsuo MIYAZAWA  
 Vice-Chair: Toyoji SAITO  
 Vice-Chair: Minoru YOKOYAMA

## IMPORTANT

<http://wcon2011.com>

Registration starts on Aug 1, 2010.